

Customizing Ultra Edit: One man's opinion

When describing Firefox I tell people, "The major advantage of Firefox is that it has zillions and zillions of extensions." And, "The major disadvantage of Firefox is that there are zillions and zillions of addons."

Well the same thing can be said about Ultra Edit. It is the most flexible, most configurable editor you will work with. And that can drive you completely and totally nuts.

Setting up Ultra Edit can make you think of *Law and Order*:

There are two difficult and equally important questions – “Can I change this?” and “How do I go about making the change?” Ta Dumm...

With that in mind, I am writing this to record the changes I made to my copy of Ultra Edit. If you made other changes to your copy of UE that you think others might profit from, please post your experience on Support.Signature.net. Share the wealth.

Get Ultra Edit from UltraEdit.com. Just like Firefox, the problem with UE is that they keep improving it and, as new goodies are added, screens change. As a result the customization you did with the last version may still be possible with the new, but it's not likely to be done the same way using the same screens in the same menus!

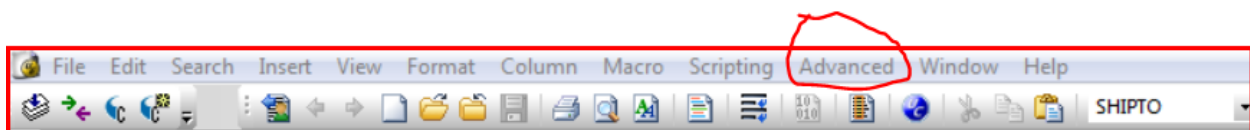
Next check out the Download page on the Signature.net web site:

<http://www.signature.net/download/Internet%20Basic%20Development%20Platform>. Be sure to review the Internet Basic Development Platform folder. Make sure you read the !Readme.htm document. You may safely ignore all the “NEW” excitement. Nothing here is NEW, but some will be useful.

The IBSTALL.EXE program modifies UE and adds a bunch of tools that make developing programs easier.

If you are using, or plan to use, Comet 32 you will want to update the Ultra Edit configuration and install the C32 compilation tool. If you are running version 10 or higher of Ultra Edit, you will run BInstallForComet32.exe. If you are running version 9, you must use IBInstallForComet32.zip and follow the instructions in the !ReadMe.txt file.

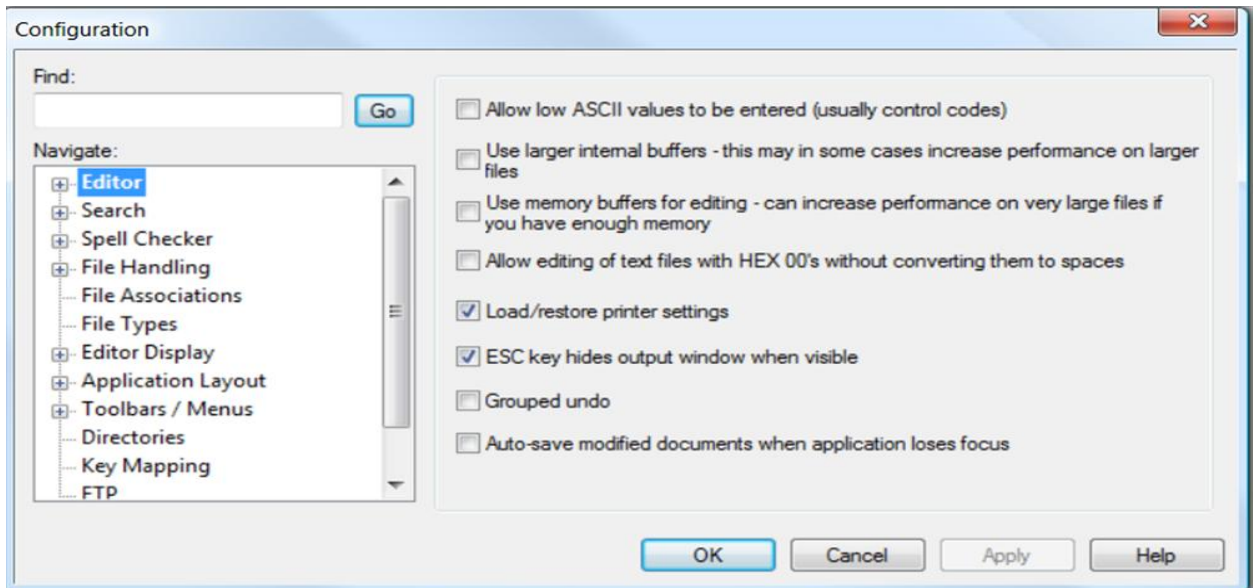
You are now ready to start customizing Ultra Edit. Begin with the Advanced menu:



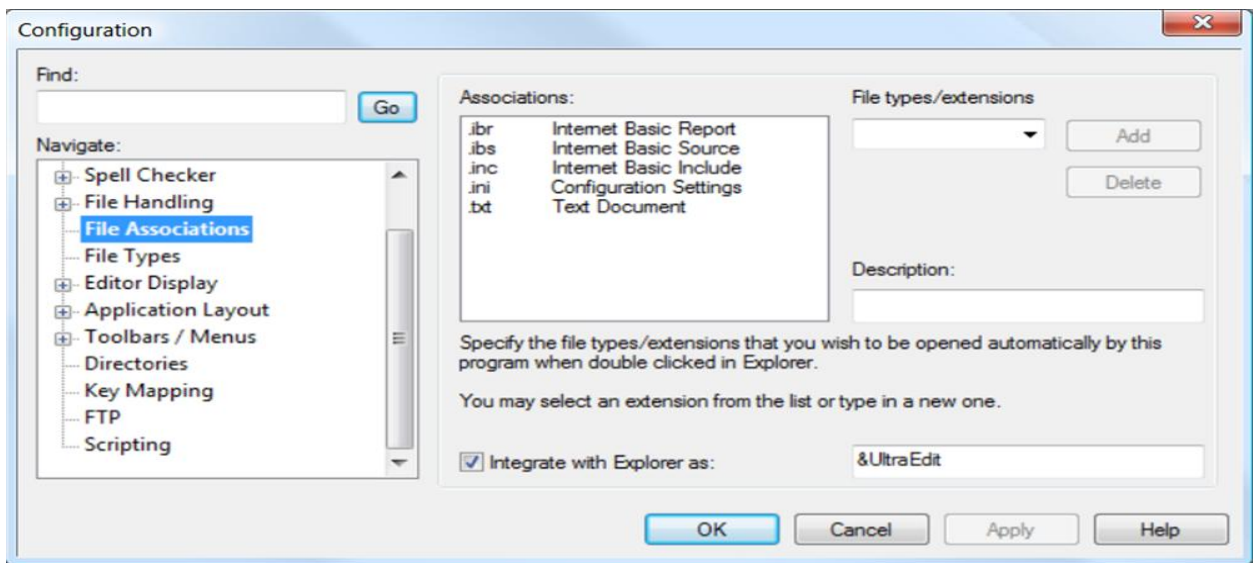
Select the Configuration sub-menu choice.



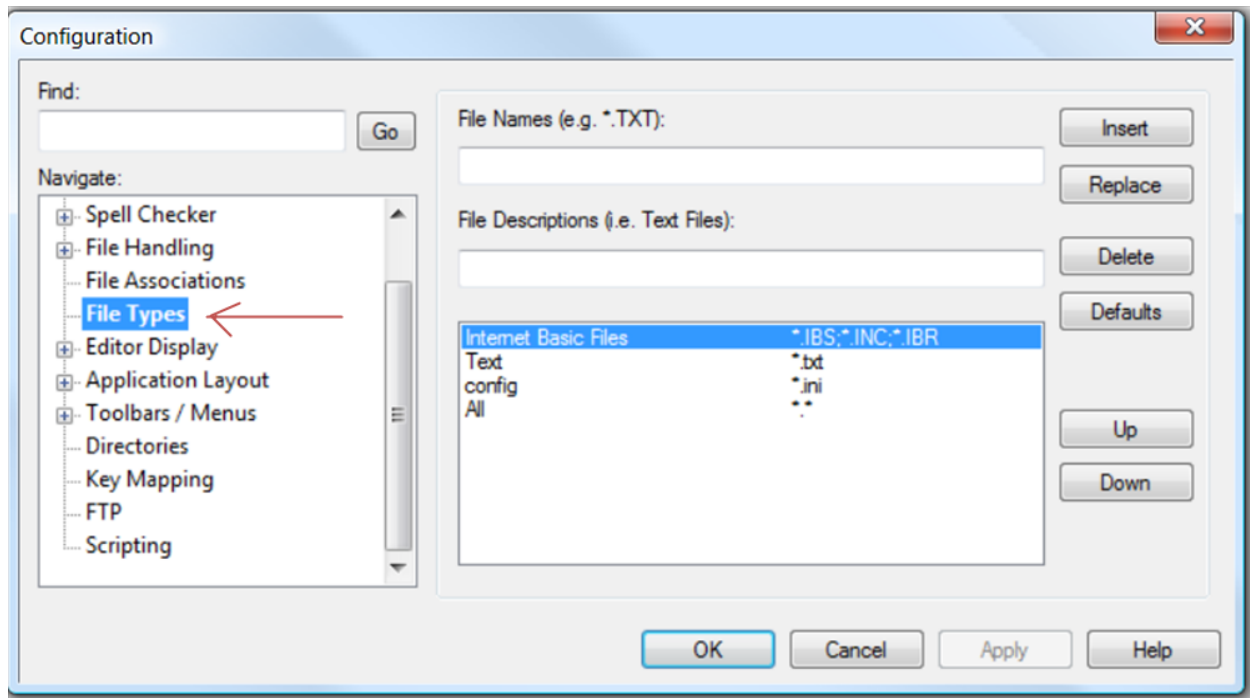
You'll be greeted with lots, and lots, and lots of choices.



Under File Handling you find File Associations. Here are mine:

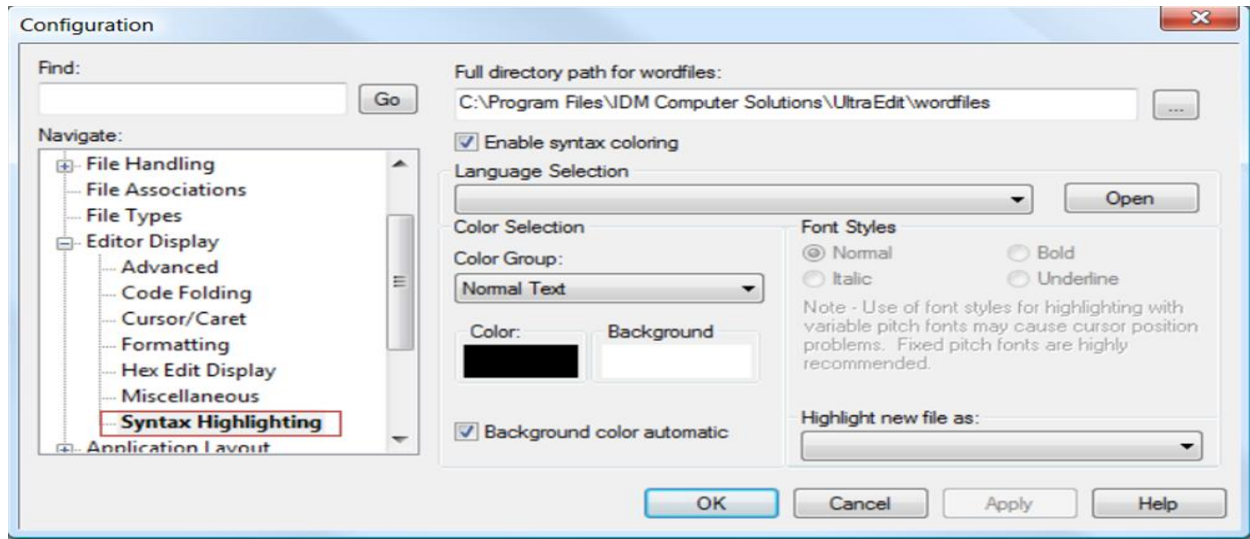


File Associations, as I understand it, will get you syntax coloring (a feature that I really like), but will **not** give you the ability to filter the Open File Dialogue. That's in File Types under File Handling:



On the subject of Syntax highlighting – in the past UE used a file called WordFile.txt to define the syntax highlighting. Signature Systems provides a nicely customized WordFile.txt file. Unfortunately when we were not looking IDM Corp changed the way this scheme works. The recent versions of UE use a file called languagename.UEW -- Internet Basic.UEW in our case. I built mine by cutting and pasting the Internet Basic block of code in the provided WordFile.txt.

You need to tell Ultra Edit where you have stashed the Internet Basic.UEW file. I elected to put it in the Program Files folder where previous versions of UE looked for the WordFile.txt file but I expect it could be stored anywhere.



The syntax highlighting scheme gets seriously mixed up when it encounters Hex variables, @00@, in the source code. Seriously mixed up. I elected to REMOVE the Escape Char = @ from the first line in the Internet Basic block and the coloring scheme seems to work much better.

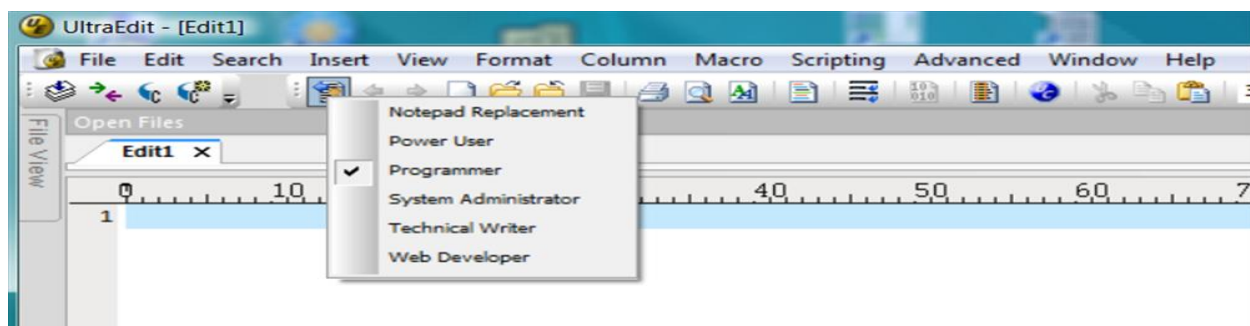
```
/L8"Internet Basic" Line Comment = ! Nocase Escape Char = @ File Extensions = IBS INC
```

Now comes the fun part; putting the Comet tools on the toolbar. I did it, but I'm not at all sure I put them in the right place or on the "right" menu.

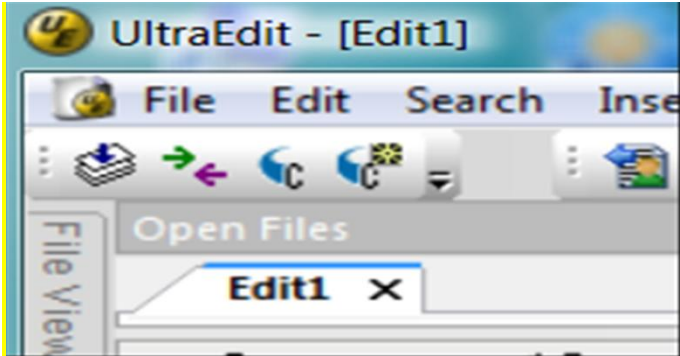
For more information on syntax coloring see

http://www.ultraedit.com/support/tutorials_power_tips/ultraedit/add_a_wordfile.html

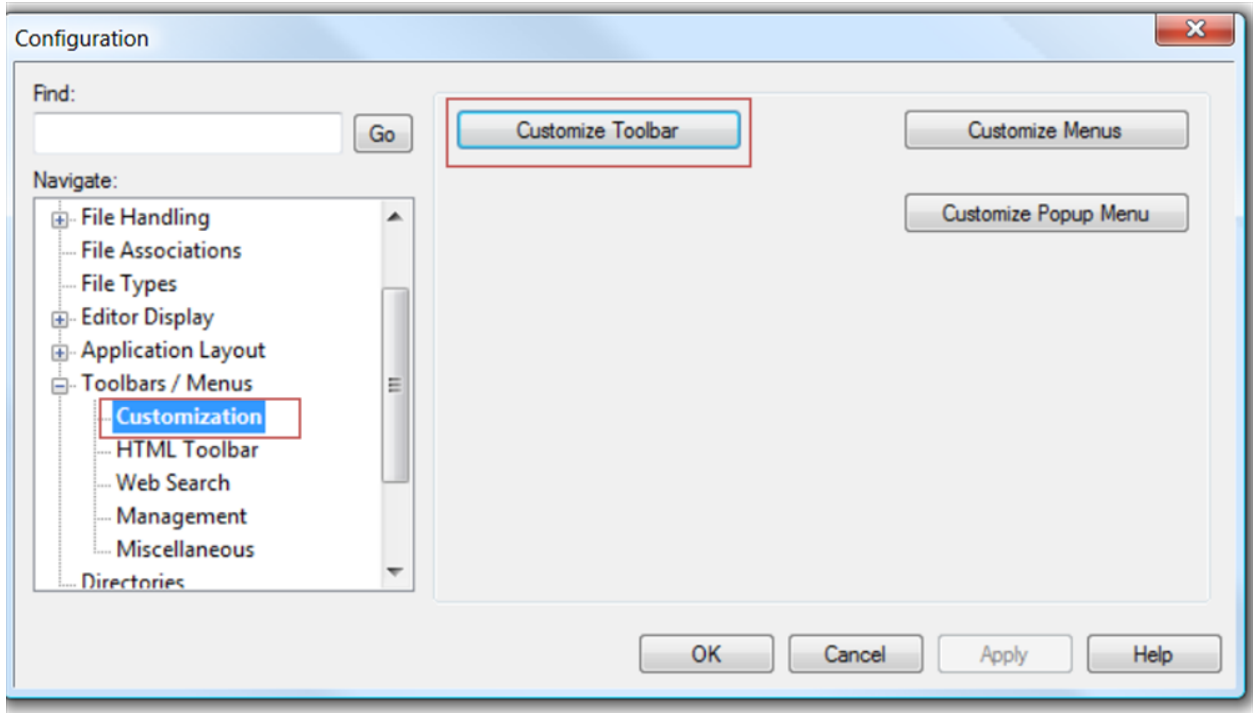
Oh yes, there is the feature on UE that I had not seen before called Select Environment. I don't think this has anything to do with Global Climate change. Really, I don't understand what it does. I can tell you it messes up your toolbars.



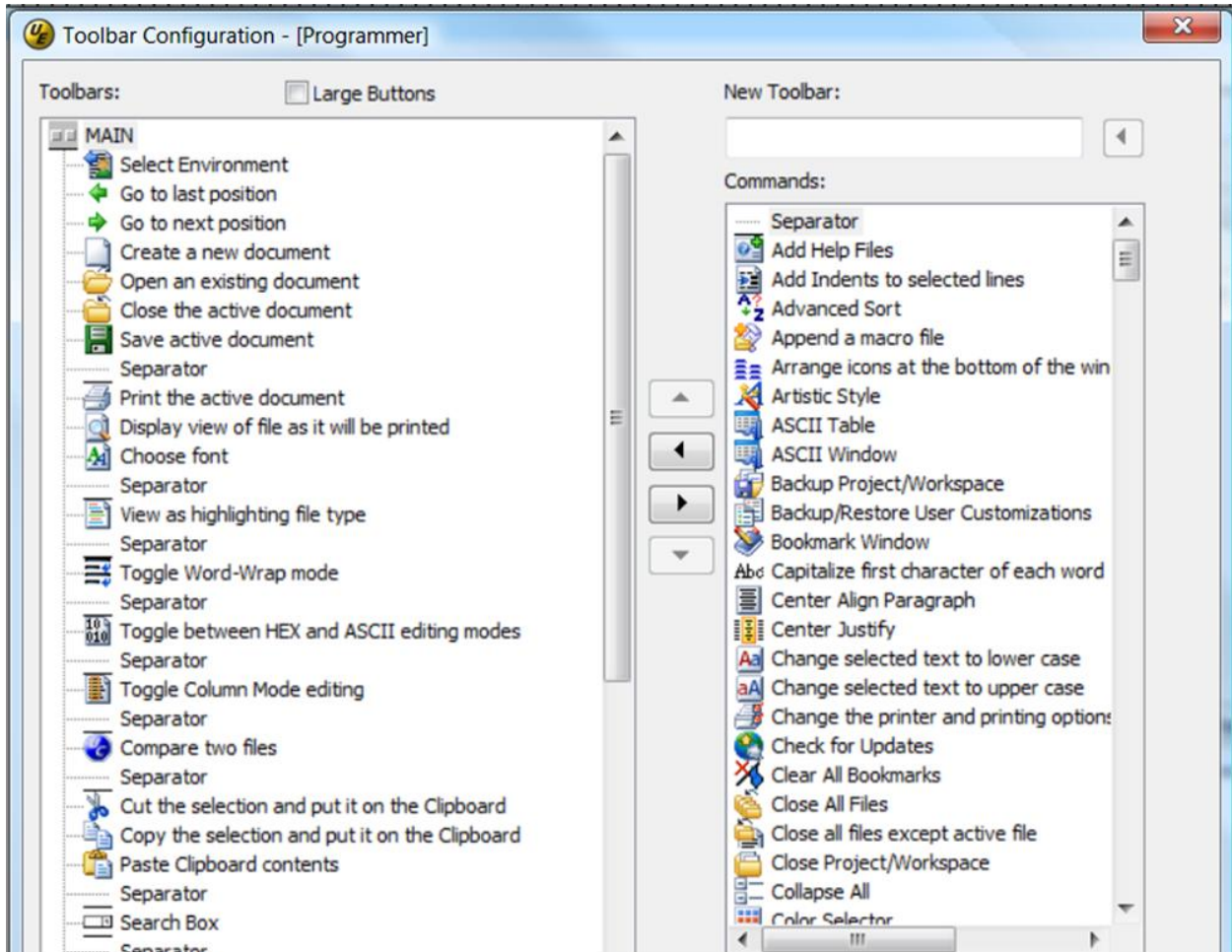
Here's where I stuffed the Comet tools:



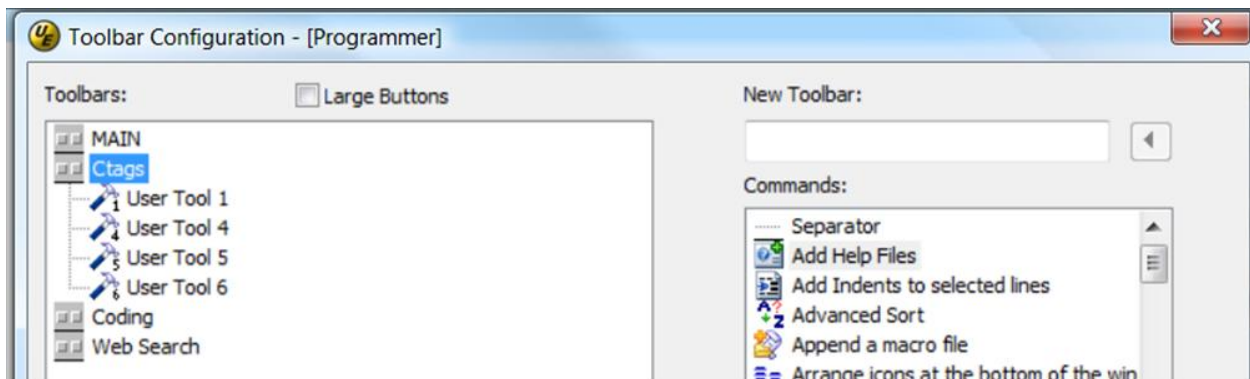
I think the IBINSTALL tool on the Signature Web site adds the tools to Ultra Edit. Here's where they get stored. It's up to you to get them onto a toolbar (if you want them on a toolbar) Start here:



Click the Customize Toolbar button. Do not despair:

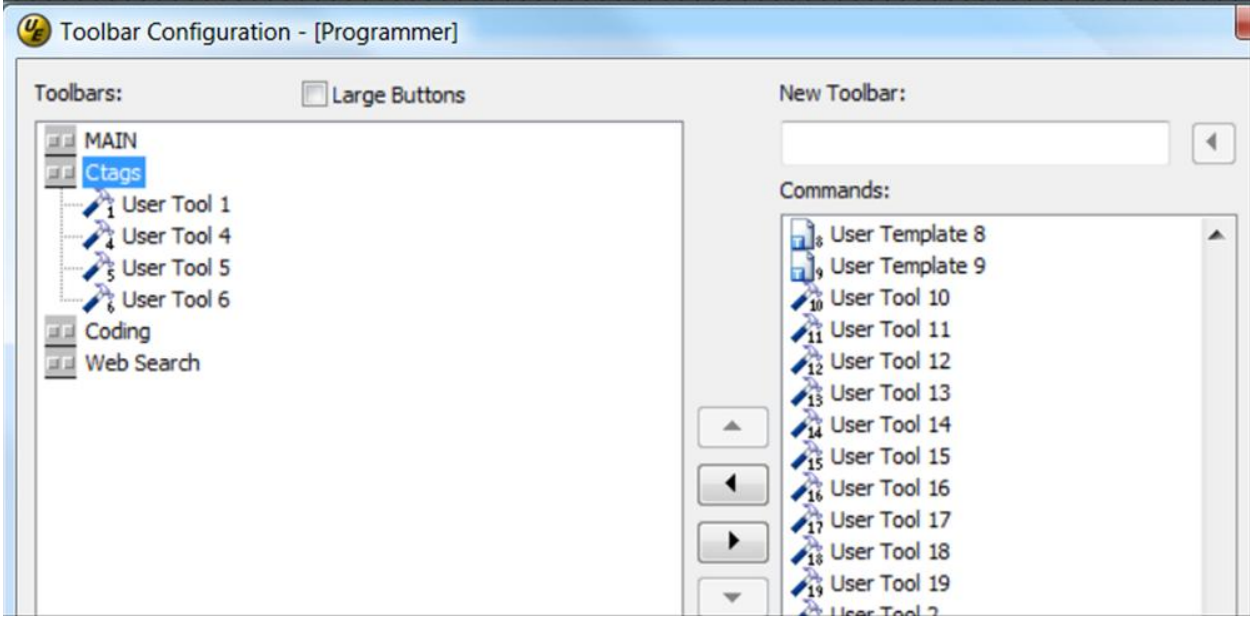


Click on, and close, the MAIN menu and things get simpler:



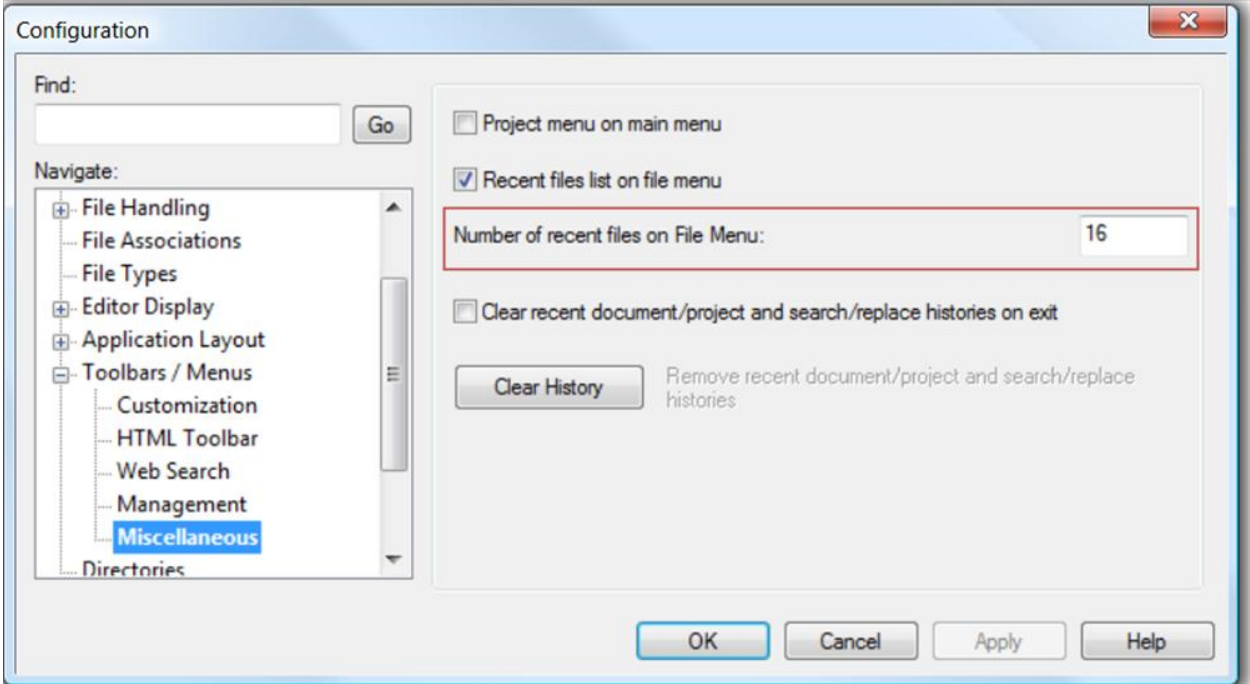
I put the “clearly labeled”(?) buttons on the equally clearly labeled CTAG toolbar. Is this the best place? I have no clue. I can report it works.

Now you ask: “Where can I find User Tool 1 and its friends?” Just remember your alphabet and scroll down the Commands window. Down and down and down.



See? And see the arrow thingies? Now all you need to know is which tool does what. The names and the icons in this window are so very unhelpful. As you can see I selected only some of the handy Comet tools. Enjoy.

I thought this was a nice change so I made it to my copy and I pass it on:



####

Steve Auerbach